



**ERPNext**

**“Excel with Us”**

**ERPNext Implementation Partner**

Victoria House, 9th Floor WING B  
New Bagamoyo Road, Dar es salaam, Tanzania.

Tel: +255 758 397 886, +255 658 397 886

[mrwabutaza@ruti-services.co.tz](mailto:mrwabutaza@ruti-services.co.tz) or [info@ruti-services.co.tz](mailto:info@ruti-services.co.tz)



**ERPNext**

**AAKVATECH**

**ERPNext Gold and Best Partner 2022**

**TAKING YOUR BUSINESS TO NEW HEIGHTS**

5th Floor Viva Towers, Ali Hassan Mwinyi Road

Dar es Salaam, Tanzania

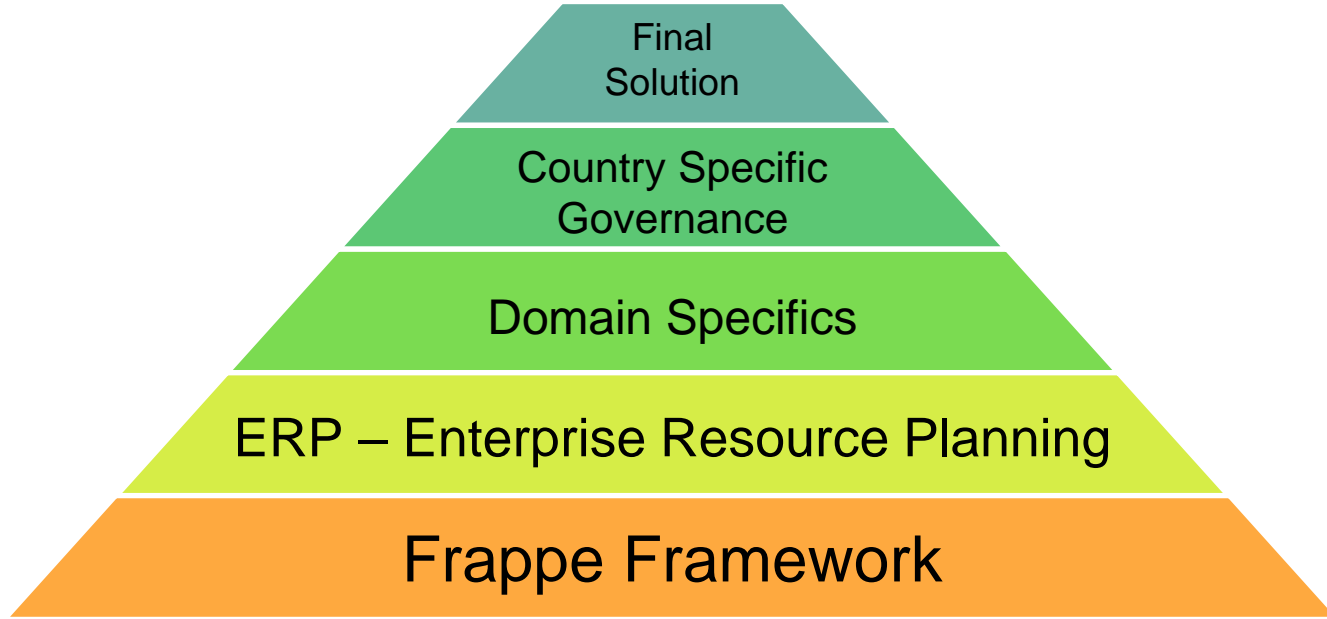
[info@aakvatech.com](mailto:info@aakvatech.com) | [www.aakvatech.com](http://www.aakvatech.com)

+255 784 246 574 / +255 783 000 888

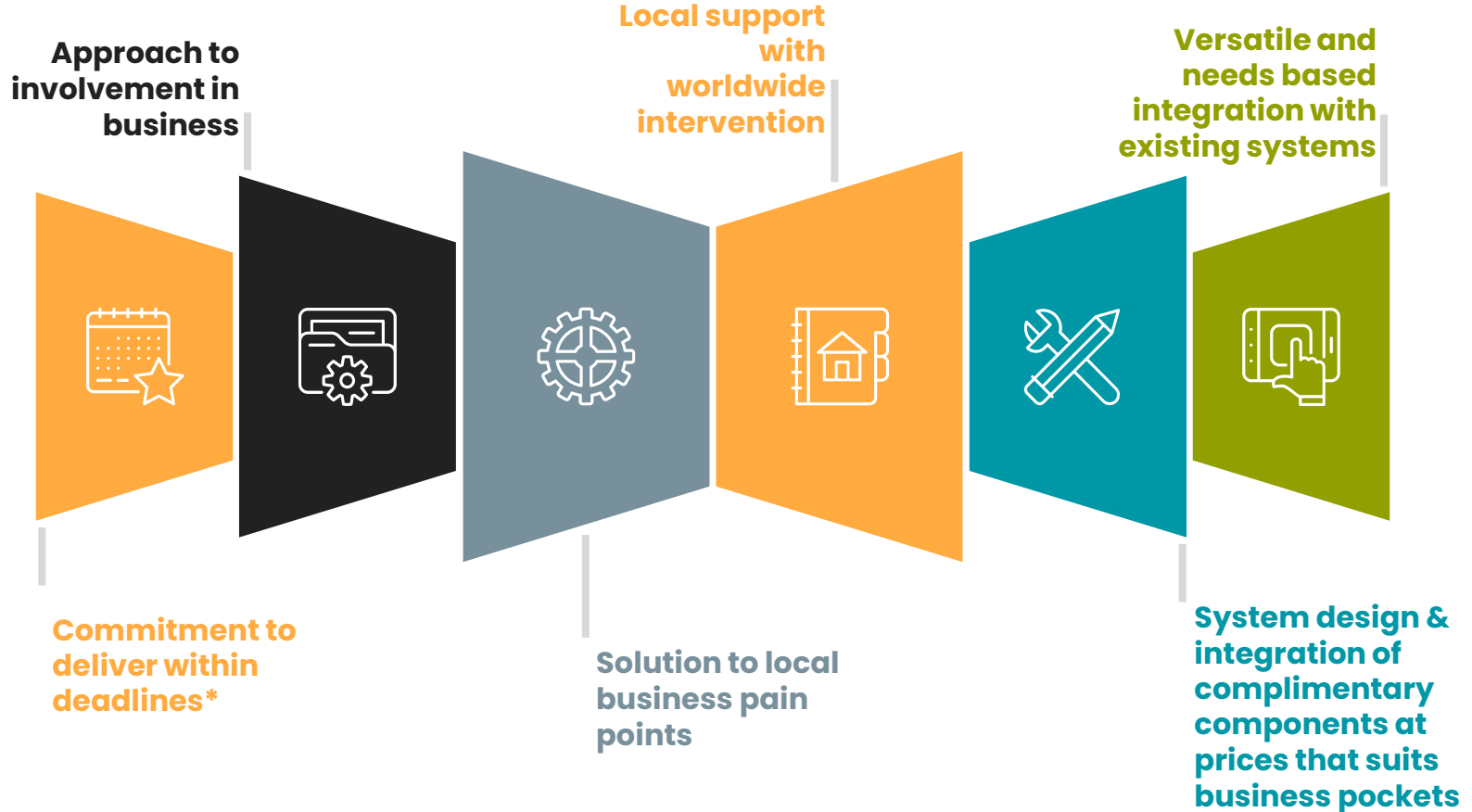
**ERPNext is the enabler  
for Digital  
Transformation**



**ERPNext is Multi Everything!**



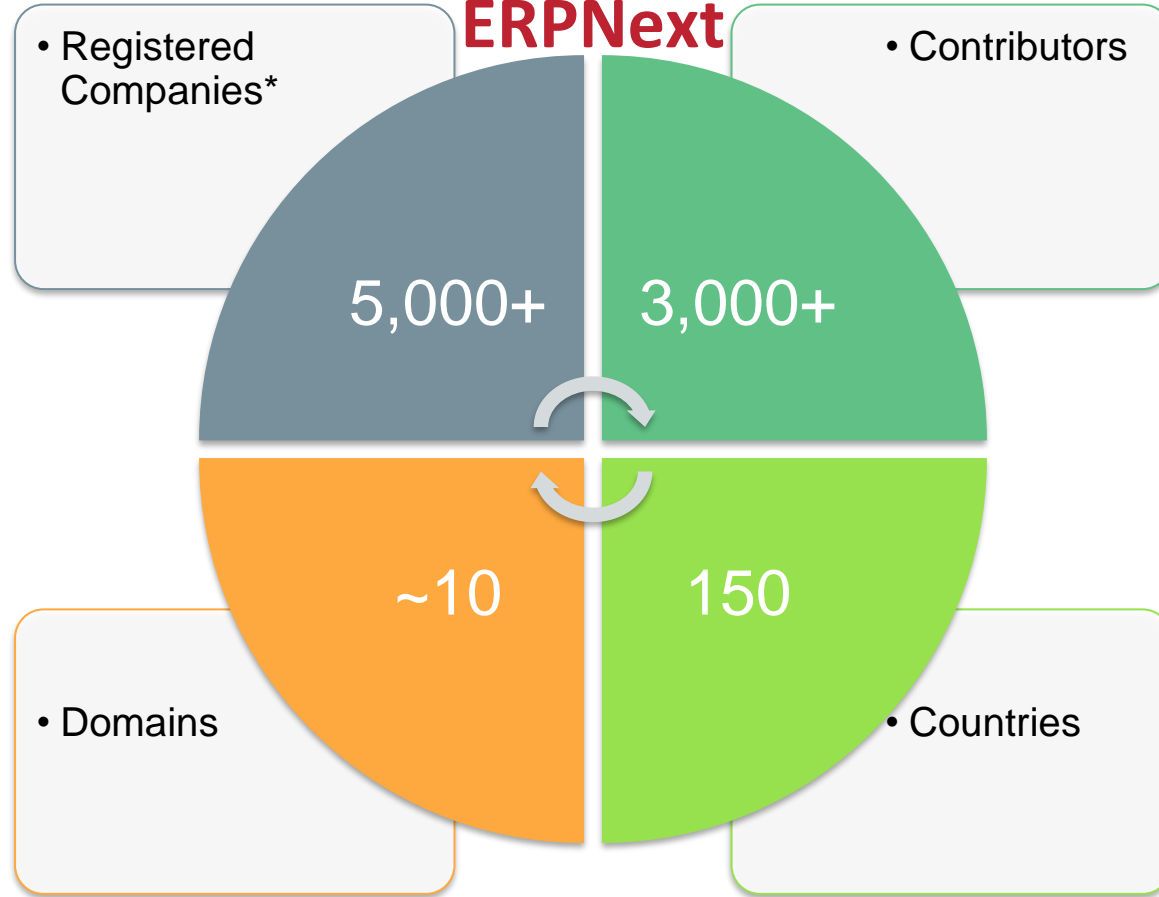
# Key differentiators of Aakvatech



# Why Aakvatech?

- Over 160 years of combined experience in ICT
- Local Tanzanian Company
- Local support with WORLDWIDE intervention
- SME involvement in all implementations
- Target local business pain points
- Versatile and needs based integration with supported equipment
- FULLY CUSTOMIZED SOLUTION FOR TANZANIA STATUTORY**

# ERPNext



# ERPNext Modules - Core

## ACCOUNTING

- Multi Company
- Chart of Account
- General Ledger
- Multi Currency
- Journals
- Financial Periods
- Operational Reports
- Management Reports
- Financial Statements

## HR and PAYROLL

- Employee Biodata
- Payroll Management
- Recruitment
- Employee Lifecycle
- Performance
- Training
- Attendance
- Leave
- Shift Management
- Loans
- Expenses Claim
- Reports

## ASSETS MANAGEMENT

- Assets Details
- Assets Categories
- Depreciations Rules
- Assets Movements
- Assets Disposal
- Assets Revaluation
- Comprehensive Reports

## CRM

- Leads
- Contacts
- Customers
- Communication
- Campaigns
- Appointments
- Visits
- Contracts
- Newsletter
- Reports

# ERPNext Modules - Core

## SELLING

- Customers
- Proforma Invoices
- Sales Order
- Sales Invoices
- Journals
- Items
- Price Lists
- Price Rules
- Receivable Reports

## STOCK

- Items
- Warehouses
- Items Groups
- Delivery Notes
- Purchase Receipts
- Picklist
- UOM
- Re-order Level, Min and Mx Stock Levels
- Stock Entries
- Material Requests
- Quality Inspection
- Batch and Serial Ni Tracking
- Stock Count
- Taxes and Charges
- Extensive Reports

## BUYING

- Material Request
- Request for Quotations
- Supplier Quotations
- Purchase Order
- Purchase Invoice
- Purchase Taxes and Charges
- Extensive Reports

## PROJECTS

- Projects Details
- Projects Types
- Tasks
- Timesheet
- Activity Costs
- Project Schedule
- Project Profitability
- Project Tracking
- Extensive Reports

# ERPNext - Verticals

## MANUFACTURING

- Production Plan
- Work Order
- Job Cards
- Items
- Stock Entries
- BOM
- Workstations
- Operations
- Routing
- Reports

## WORKSHOP MAINTENANCE

- Service Vehicle
- Vehicle Model
- Vehicle Make
- Vehicle Type
- Tasks
- Workshops
- Parts and Consumables
- Pre Inspection Template
- Services Template
- Job Cards
- Service Tasks Template
- Billing/Invoicing
- Extensive Reports

## HEALTH MANAGEMENT

- Patient Repository
- Healthcare Practitioners
- Practitioner Schedule
- Patient Appointments
- Patient Encounters
- Document Storage
- Patient History
- Emails
- Prescriptions
- Clinical Procedures
- Medicines And Equipment
- Billing And Pricing
- Automated Stock Replenishment
- Extensive Reports

## AGRICULTURE

- Crop
- Crop Cycle
- Location
- Soil Analysis
- Water Analysis
- Soil Texture
- Weather
- Diseases
- Fertilizers

## SCHOOLS / COLLEGES MANAGEMENT

- Students
- Instructors
- Guardian
- Students Groups
- Programs/Courses
- Students Admission
- Fees Management
- Course Schedule
- Students Attendance
- Students Assessment
- Students Management

# ERPNext - Verticals

## LOAN MANAGEMENT

- Loans
- Loan Types
- Loan Application
- Loan Security
- Loan Processing
- Loan Disbursement
- Loan Interest Accrual
- Loan Repayments
- Loans Management Reports

## TRANSPORT AND LOGISTIC

- Transport Order
- Trip Route
- Trip Locations
- Trip Locations Type
- Vehicles
- Vehicle Inspection Template
- Trailers
- Cargo Type
- Fixed Expenses
- Vehicle Trip
- Fuel Requests
- Requested Payments

## NGOs

- Members
- Membership
- Membership Type
- Donors
- Donor Types
- Donations
- Grants Applications
- Chapter
- Volunteers

## PROPERTY MANAGEMENT

- Properties
- Unit Types
- Leases
- Guards Shift
- Key Sets
- Meters/Readings
- Insurance
- Security Attendance
- Outsourced Attendance
- Daily Checklist
- Billing

## RETAIL/ DISTRIBUTORS

- POS
- Price List
- Customers
- Items
- Warehouse
- Cash Reconciliation
- POS Opening
- POS Closing
- Loyalty Points Entry
- Reports

## Key differentiators of ERPNext

- All modules built-in
- eCommerce
- Website Builder
- Unlimited Users
- Attach Documents
- Take & Attach Photographs
- SMS alerts
- Email Alerts
- Notifications on Telegram
- Unlimited Workflows
- Print Formats
- Authorization Rule

- Integration with systems
- Secured Customer Portal
- Secured Supplier Portal
- Audit Trial
- Dynamic Charts
- Collaborate with Comments
- Email from system
- User friendly customization
- Online Videos for assistance
- Online documentation
- Integrated with TRA for Tax Invoice
- Financial returns for TRA
- Statutory reports for Payroll

# Key differentiators of ERPNext

**Comprehensive**: Automate all business processes, no need for multiple systems.

**Ubiquitous**: An application for all processes from top to bottom

**Workflow**: Reduce reliance on process memory by operating in a structured workflow

**Transparency**: Show all what is necessary to the relevant team members.

**Collaborative**: Discuss on per business document level with all stakeholders.

# Why run on the Cloud

1. Upfront cost of server and regular upgrade of hardware (every 3 years)
2. Standby Server management and replication
3. Internet security requirements when you expose multiple users access systems over the Internet.
4. Updating each and every component on the server to ensure it has all security patches applied.
5. Loose focus from core business and start involving the management into ICT related issues.
6. Power backups management
7. Internet connectivity backups management
8. Recurrent cost of expensive employees that are specialized for ERPNext hosting.
9. Knowledge gets outdated due to limited exposure environment of a non ICT company.
10. Access to 24 x 7 support from hosting services provider
11. Future is Cloud

# With Aakvatech...



Customized Setup



Implementation



Training



Hosting and Security



Annual Maintenance Contract



# ERPNext



and



ERPNext Gold and Best Partner 2022

## TAKING YOUR BUSINESS TO NEW HEIGHTS